

# Vue-MV Multi-Diode Controller



### Applications:

- Fiber lasers and amplifiers
- Materials processing
- Medical systems

### Benefits:

- Ease of integration
- Faster time to market
- Improved system reliability

The **Vue-MV** controller was designed for applications that use multiple high-powered discrete diodes. With 15V compliance, the Vue-MV can control as many as 7 diodes in series at up to 10A. Thanks to the Vue-MV's digital and analog interfaces, multiple controllers can be combined and operated either individually or as a group. This makes the Vue-MV a perfect choice for fiber laser control. Pulsed operation makes it ideal for materials processing and medical applications.

The Vue-MV has all the attributes expected in an OEM controller—and more. In addition to being compact, low cost and configurable, its extensive feature set allows it to be a bench top controller, a stand-alone system controller, or an embedded control component in a complex instrument.

With WinVue software and an attached PC the user can do more than just control the laser diode. WinVue provides tools to aid the researcher in R&D and the production engineer in manufacturing: data logging, one-click LIV acquisition, power calibration, pulse repetition rate and width selection, power and current limits, and display of all control settings and inputs.

As a stand-alone system controller, the Win-MV can be programmed with warm-up and operating conditions. The controller will maintain a pre-set operating state while protecting the diode and the system by monitoring temperature, input and output voltages, current, and an interlock.

### Features:

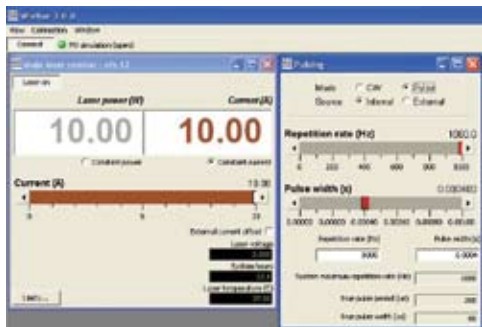
- 10A and 15A versions available
- CW or Pulse Operation
- Advanced control and Monitoring
- Stand-alone or embedded operation
- WinVue user interface



Embedded PCB only option

When the Vue-MV is embedded into an OEM system, it can be controlled by an extensive library of serial commands.

For more information and to see why the Vue-series is the only laser diode controller you'll ever need, contact VueMetrix today.



WinVue Graphical User Interface

## Specifications:

	MV-12	MV-15
<b>Output</b>		
Output Current and Voltage		
Option-01	10A, 12V max.	10A, 15V max.
Option-02	12A, 10V max.	n/a
Option-03	15A, 8V max.	15A, 10V max.
Output Current Resolution		
	0.03% full scale	0.03% full scale
Noise/ripple @ Max. Load		
	0.1% RMS	0.2% RMS
Compliance Voltage @ Max. Current		
	1.5 -12 V	6-15V
Laser Voltage Measurement Range		
	0-15V	
Laser Voltage Measurement Resolution		
	0.03%	
Laser Voltage Measurement Accuracy		
	3%	
<b>Pulsed Operation</b>		
Pulse Rate (Internal Control)		
	User settable up to 1 kHz, max.	
Pulse Width (Internal Control)		
	User settable*	
External Trigger		
	TTL, edge trigger	
External Level Control		
	0-2.5V	
<b>Monitor Inputs</b>		
Light-loop/monitor Input Signal Range		
	0-2 mA or 0-2.5V, factory settable	
Light-loop/monitor Input Signal Resolution		
	0.03% FS	
Light-loop/monitor Input Signal Accuracy		
	User calibrated using software interface	
Temperature Sensor (not included)		
	NTC 10KΩ	
Temperature Resolution		
	0.03°C, typical	
Temperature Accuracy		
	User calibrated	
<b>Connectors</b>		
Data		
	USB-B	
Output		
	DB15 female, mixed pin (male mating connector included)	
External Trigger		
	SMB	
External Level		
	SMB	
Interlock		
	Molex 43025-0200 (male mating connector included)	
Power		
	DIN-8	
<b>General</b>		
Input Power (Optional AC power supply available)		
	15 VDC +/- 5%	18 VDC +/- 5%
Current		
	8.6A, max.	
Efficiency		
	95%	
EMI		
	Designed to meet FCC-B	
Operating Temperature		
	0°C to 40°C, non-condensing	
Dimensions (HxWxD)		
	2.02"x2.62"x6.48"	
<b>Optional AC Power Supply</b>		
Input Voltage		
	90-264 VAC	
Frequency		
	47-67 Hz	
Input Current		
	< 1.5A at 115V	< 2A at 115V

### Company Information:

VueMetrix, Inc.  
 960 Hamlin Court  
 Sunnyvale, CA 94089-1401  
 Telephone: +1 408.734.9974  
 Fax: +1 408.734.7997

Contact us via email:  
[info@vuematrix.com](mailto:info@vuematrix.com)

See our website at:  
[www.vuematrix.com](http://www.vuematrix.com)

VueMetrix endeavors to continually improve product performance. Specifications are subject to change without notice.

